

Data Sheet

UNIVERGE® SV8500

Communication Server



The Premier IP Communications Server



At a glance

- Increase customer satisfaction and lower expenses
- Supports open standards for simplified business process integration
- Provides advanced applications and reliable business continuity support
- Seamless network integration
- Complies with green standards

The UNIVERGE® SV8500 is a powerful enterprise communications solution capable of supporting up to 4,000 endpoints in a single system.

Reliable, scalable and energy-efficient, it is an advanced application server that supports voice, unified communications and mobility solutions for tens of thousands of users. Designed to easily and efficiently scale, the SV8500 meets the needs of the largest enterprises, supporting up to 192,000 ports in a networked environment.

User-centric

As a part of NEC's UNIVERGE 360 commitment to putting people in the centre of communications, the SV8500

unifies the enterprise through the high-efficiency technology that large enterprises require. The SV8500 is the premier IP communications server for regional and global expansion, worker mobility and environmental responsibility. It offers an extensive IP feature set in a flexible, scalable, secure package.

Increase customer satisfaction and lower expenses

Enable your customers to reach workers wherever they are. The SV8500 extends communications to branch and

international offices simply and cost-effectively. It supports a number of NEC's mobility-enhancing tools that empower users to be productive whether they are at their desks or have stepped away. Individuals, departments and locations can work more efficiently by communicating seamlessly in real time.

Data Sheet

UNIVERGE® SV8500

Communication Server



Provide business continuity

The SV8500 ensures business continuity through component redundancy. It also provides IP fail-over for stations and trunking, clustered survivability, power failure transfer and call routing for self-healing networks. Its architecture is ideal for mission-critical situations. Advanced fault diagnosis, error-correcting memory, and component redundancy all ensure high availability and operational continuity.

Simplify business process integration

The SV8500 provides support for open-standards for integrating communications into business process applications, facilitating process simplification. Standards and devices supported by the SV8500 include:

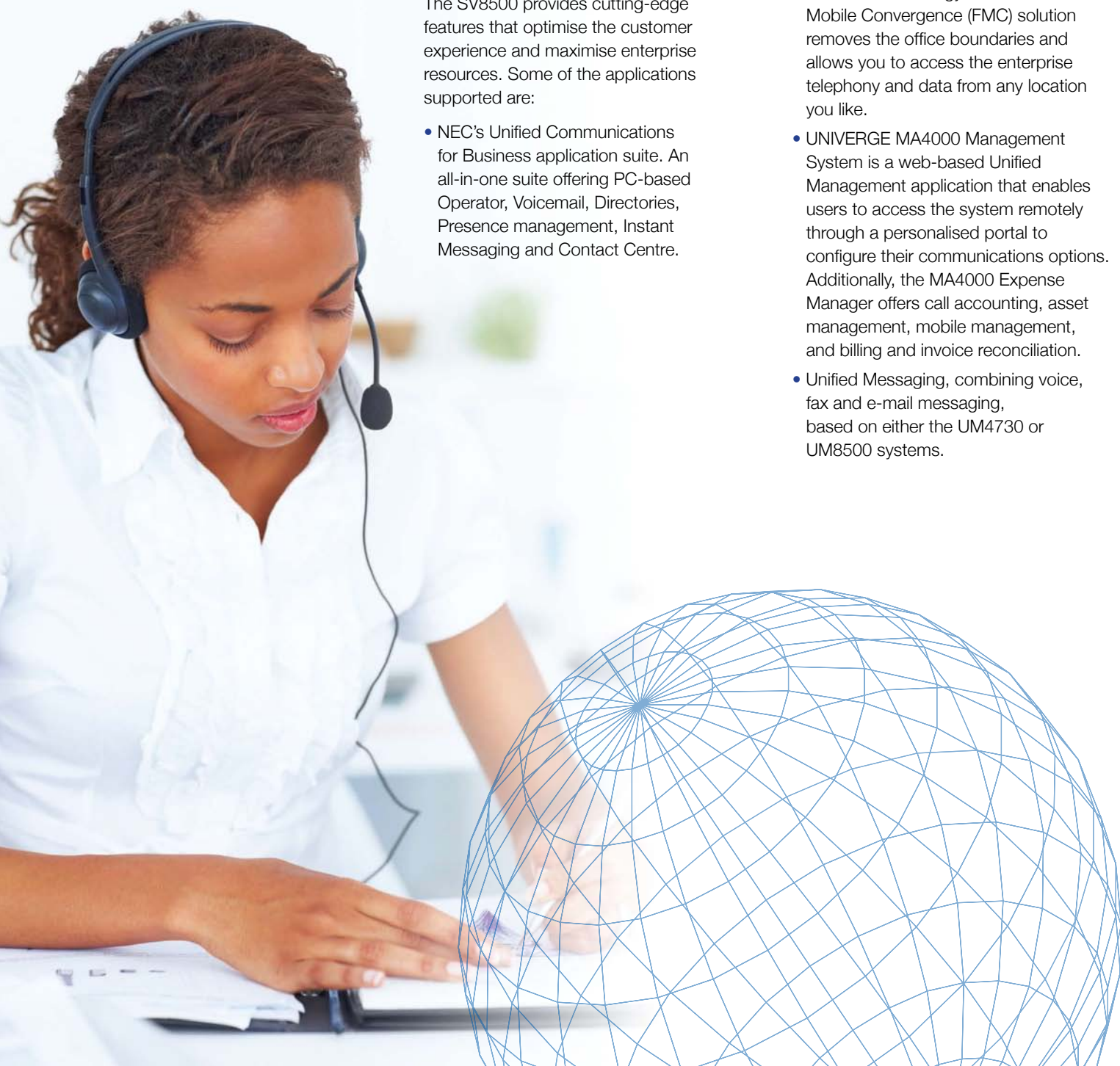
- SIP-enabled devices
- XML integration
- Managed data network infrastructure

Delivers advanced applications

The SV8500 provides cutting-edge features that optimise the customer experience and maximise enterprise resources. Some of the applications supported are:

- NEC's Unified Communications for Business application suite. An all-in-one suite offering PC-based Operator, Voicemail, Directories, Presence management, Instant Messaging and Contact Centre.

- UNIVERGE DT700 / DT300 Series desktop phones raise the standard with an extensive feature set, XML application support, and a revolutionary modular design.
- NEC's softphone, which integrates communications into the computing environment to eliminate the need for a physical phone and extend the desktop around the world.
- Business Mobility solutions within the office, based on either IP-DECT or VoWLAN technology. NEC's Fixed Mobile Convergence (FMC) solution removes the office boundaries and allows you to access the enterprise telephony and data from any location you like.
- UNIVERGE MA4000 Management System is a web-based Unified Management application that enables users to access the system remotely through a personalised portal to configure their communications options. Additionally, the MA4000 Expense Manager offers call accounting, asset management, mobile management, and billing and invoice reconciliation.
- Unified Messaging, combining voice, fax and e-mail messaging, based on either the UM4730 or UM8500 systems.



Data Sheet

UNIVERGE® SV8500

Communication Server



Support green initiatives

The SV8500 is an ecologically sound, compact system that uses 23% less power than previous generations of IP communication servers. NEC provided special attention to its environmental impact and delivered a RoHS compliant system that includes:

- Reduced air conditioning requirements for the server
- Recyclable materials and components that use environmentally safe chemicals
- Elimination of lead and mercury in circuit boards
- Documentation provided in electronic format rather than paper booklets

Migration

For those customers, who invested in the past in products like 2400 IPX or SV7000, NEC proves again that your investment in NEC products is important - no matter when you made it. Migrating now to the SV8500 protects your initial investment. Even though SV8500 is designed to be a part of a pure IP architecture, the SV8500 can accommodate pre-existing traditional systems and support either centralised or distributed equipment.



Networking

The SV8500 can be incorporated into networks that contain a wide range of NEC products like UNIVERGE SV7000, SV8300, NEAX 2400 IPX/IMX/ICS, 2000 IPS and SOPHO iS3000. As such SV8500 provides a path to IP and protects your investment. This provides the customer with a broad range of server options to address needs at the edge of the network as well as the core.

Investment protection

For existing customers, NEC has developed an easy way to transition existing NEAX® 2400 ICS, IMX, UNIVERGE NEAX 2400 IPX or UNIVERGE SV7000 Communications Servers into a full-featured IP communications system that supports advanced business productivity applications. This protects our customer's initial investment and extends the life of their current voice infrastructure.



Data Sheet

UNIVERGE® SV8500

Communication Server



Specifications

Dimensions	• 3 rack units high, 19 inches wide
System Voltage	• 100-240V AC or -48 VDC
Processors	• Intel Dual Core Duo 2.16GHz
Gateway Chassis Slots	• 17
Trunks	<ul style="list-style-type: none"> • Analog Trunks (COT):* 4,000 max • T1/PRI Channels:* 4,000 max • SIP Trunks:* 4,000 max
Stations	<ul style="list-style-type: none"> • Digital Terminals:* 4,000 max • Analog Terminals:* 4,000 max • IP Terminals (hard/soft): 4,000 max
Networking	<ul style="list-style-type: none"> • FCCS networking (IP): 64 nodes max • CCIS networking (T1/IP): 64 nodes max • Ports: Up to 192,000
Standards	<ul style="list-style-type: none"> • Devices: SIP-enabled • Databases: LDAP-compliant • Languages: XML • Other: 802.3af
Applications	<ul style="list-style-type: none"> • Internal ACD: Max 1000 stations • OAI support: UNIVERGE 3rd party apps • Conference Bridge: Max 32 ports/card; Max 255 cards
Regulatory Compliance	<ul style="list-style-type: none"> • FCC part 15, Class A & part 68 • UL 1459 • Section 508 compliant • CSA standard C 22.2 No. 225 • CE Mark • Industry Canada (IC) CS-03

Available Options

The SV8500's architecture accommodates and supports our customer's pre-existing system equipment and terminals while offering an extensive IP feature set in a flexible, scalable secure package.

Optional 1 RU MPC Chassis Cards: 2 Slots Per MPC	
6COT MG	• 6 analog trunks
4LC2COT	• 4 analog & 2 trunks
PRI MG	• 1 PRI trunk
8LC	• 8 analog stations
VS-32 Conf. Module	• 32 conference ports
MGSIP (16)	• 16 SIP trunks
SR-MGC (S)	• Stand-alone, supports up to 1000 ports
MG-SIP (96)	• Stand-alone, supports up to 96 SIP Trunks
Optional Gateway Chassis	
Height:	• 8 RU high
Availability:	• For high-density TDM digital and analog interface cards
Universal Card Slots:	• 17
Optional IP Gateway	
IP Gateway (IPG)	• 32 Digital Series E, i or DT300 terminals

*Based upon system configurations

* Maximum number of simultaneous calls is limited by the Voice over IP Resources (IP Pad Channels) available

** Maximum number based on peer to peer, maximum independent of chassis configuration

NEC Infrontia Limited Innovation House, Mere Way, Ruddington Fields Business Park, Ruddington, Nottingham NG11 6JS, UK

Tel: 0115 969 5700 Fax: 0115 931 5970 Web: www.neci.co.uk

LIT-SV8500-002-0811

This publication provides outline information only which (unless specifically agreed by NEC Infrontia in writing) may not be used, applied or reproduced for any purpose or form part of any order or contract or be regarded as a representation relating to the products or services concerned. NEC Infrontia reserves the right to alter without notice the specification, design, price or conditions of supply of any product or service. E&OE.



UNIVERGE360 is NEC's approach to unifying business communications. It places people at the centre and delivers on an organisation's needs by uniting infrastructure, communications and business.

Empowered by innovation